

Additional Monitoring for Victoria 2010

Cyril Durrenberger

Gary McGaughey

Jarett Spinhirne

Elena McDonald-Buller

David Allen

The University of Texas at Austin

Phase I Task 2 Ambient Monitoring

- Two new enhanced upwind and downwind background monitoring sites
- Routine, seasonal, hourly ambient monitoring data
- Coletto Creek installed June 23
- Inez installed June 24
- Deactivate on Nov 15

Data in TCEQ LEADS since August 27

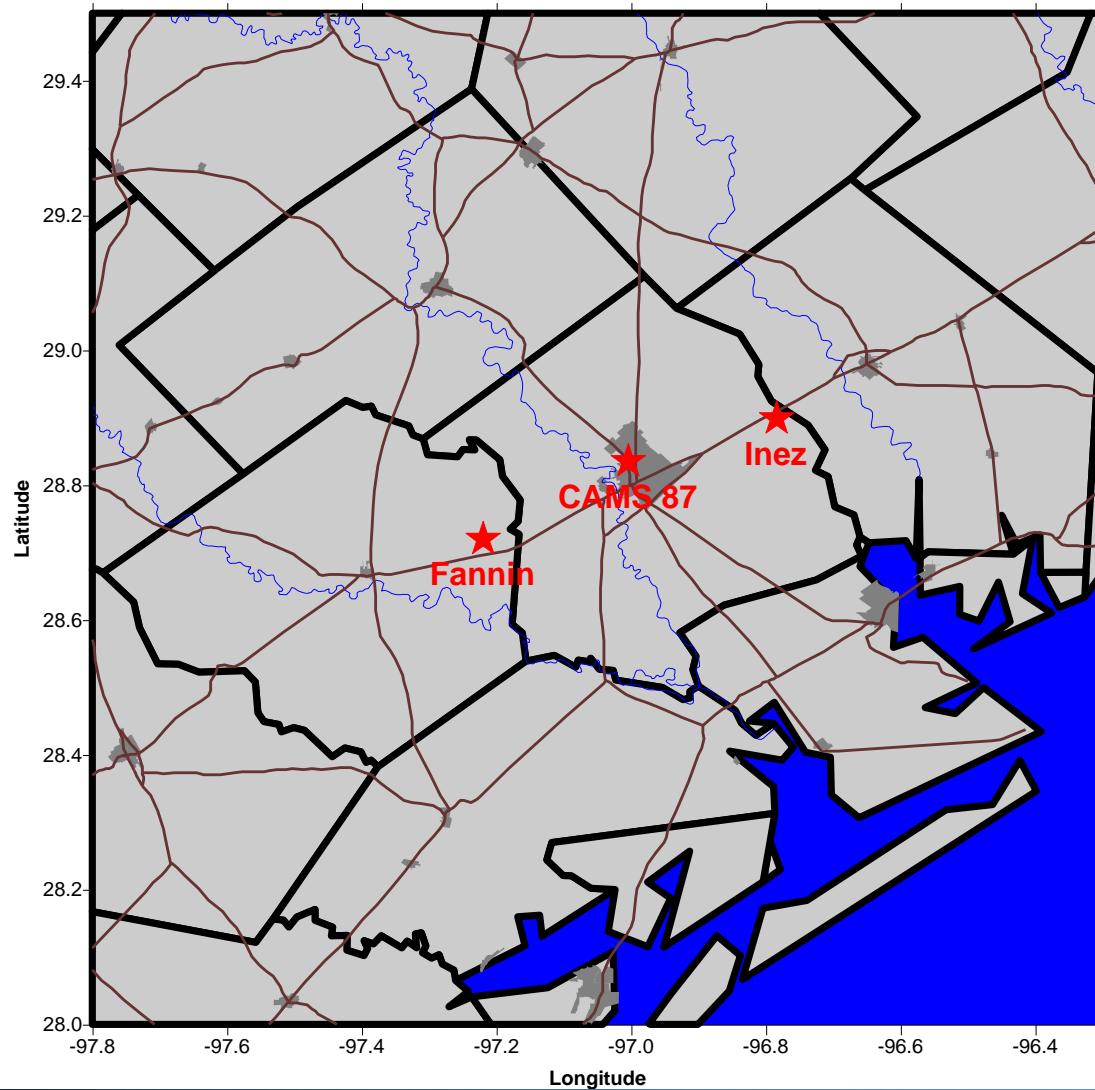
- Measure
 - Ozone
 - NOx at one site
 - Wind speed
 - Wind direction
 - Temperature

Phase I Task 2 Ambient Monitoring

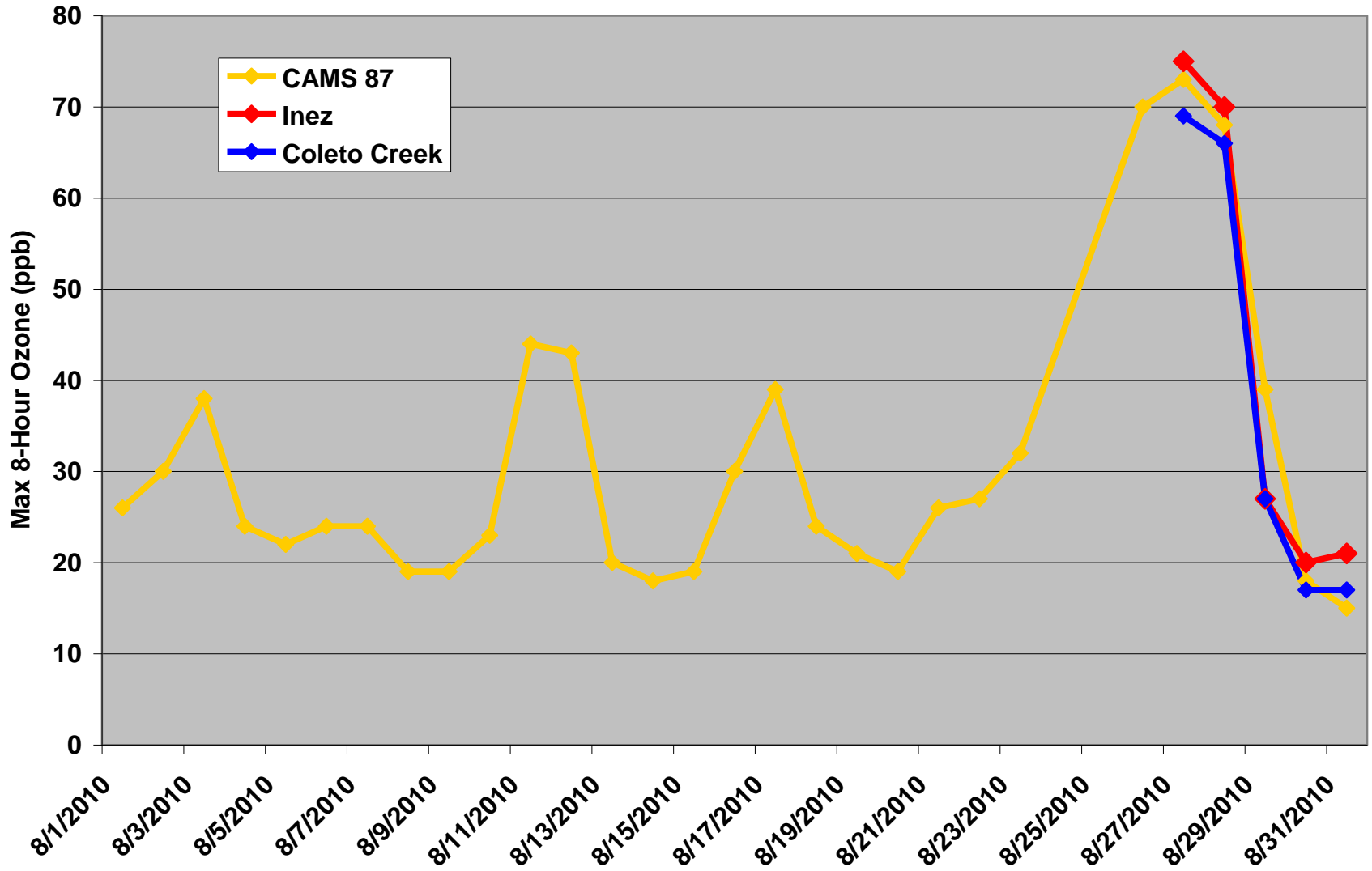
Two new sites

- **Sites based on results from conceptual description, photochemical modeling and surface mobile sampling**
- **High ozone concentrations measured when the winds are from the east to east-northeast**
- **Upwind site at Inez**
 - **West Industrial Independent School District Elementary School**
- **Downwind site at Fannin**
 - **Coletto Creek Power Plant**
 - **Near railroad maintenance facility**

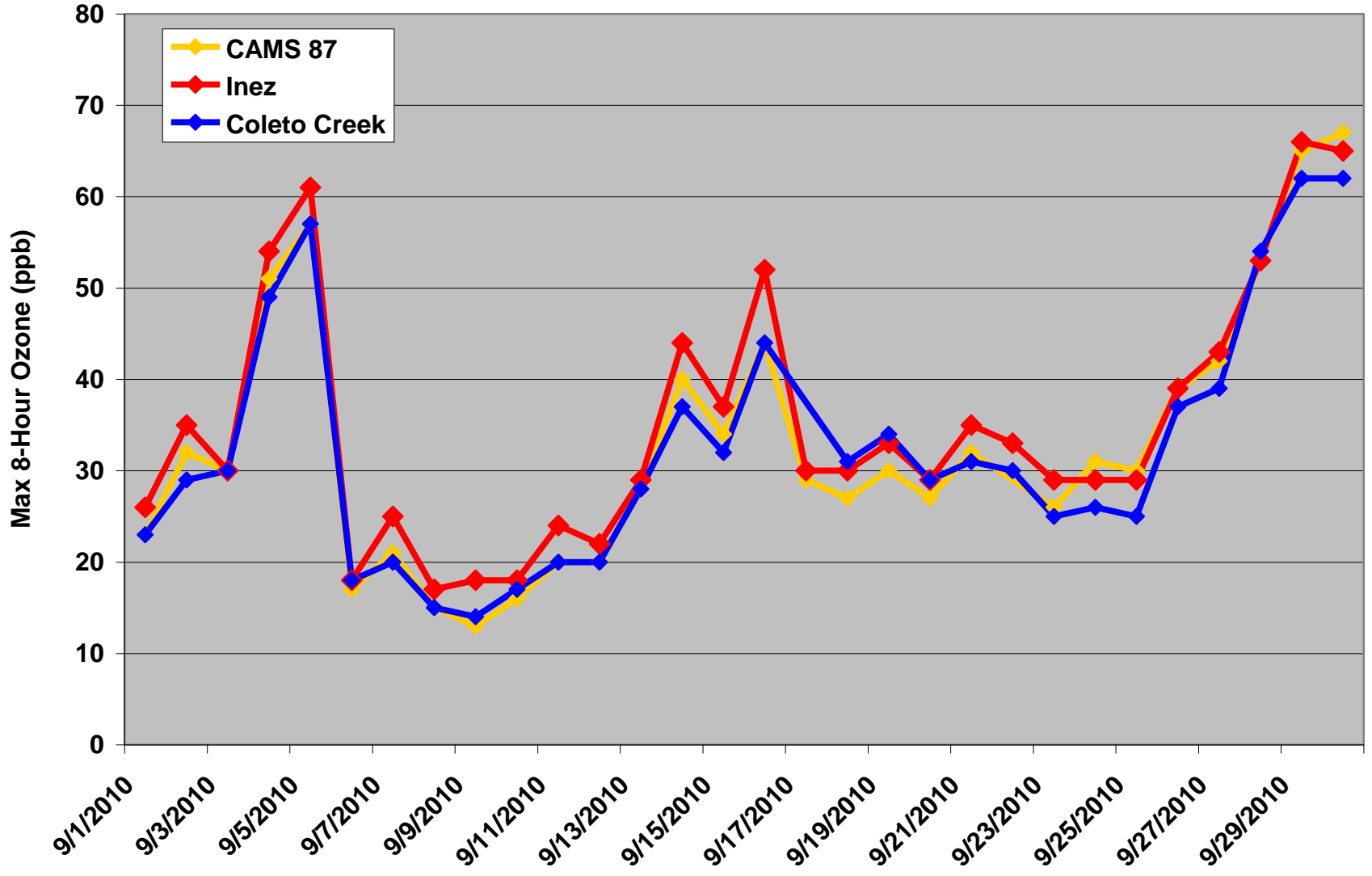
Phase I Task 2 Ambient Monitoring



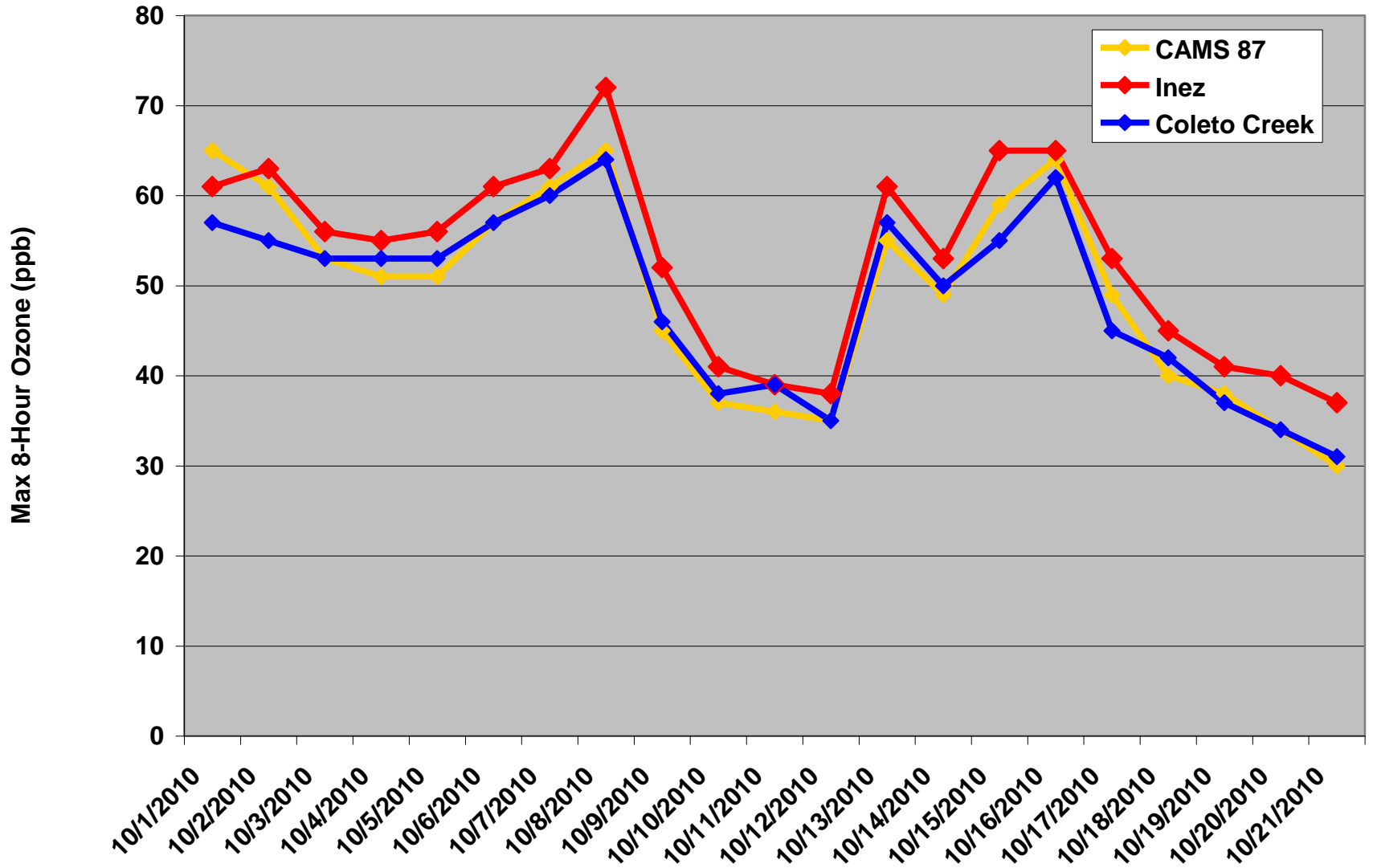
August 1 - 31, 2010



September 1 - 30, 2010



October 1 - 21, 2010



Questions?